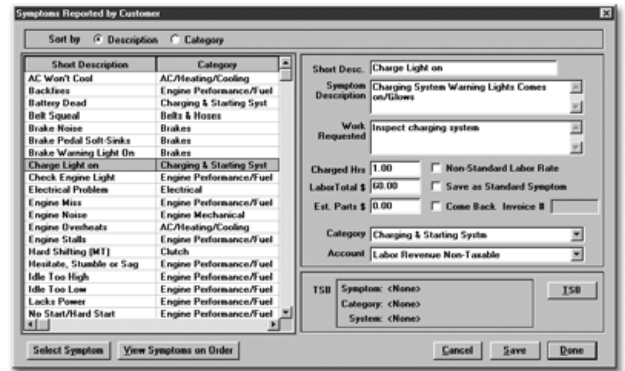


# Mitchell1

The First Choice of Automotive Professionals

## OnDemand5 Manager™

The hub of our software products, **OnDemand5 Manager** provides an integrated approach to total repair shop productivity. You get instant access to sales, marketing, and reporting data. From estimate to invoice, Manager tracks every job from start to finish. With more than 100 different reports, you are in complete control of your shop's profits. Going a step beyond, **ManagerPlus** provides all the functionality of Manager "plus" parts inventory and purchase-order control.



Using the powerful symptoms wizard, diagnostic time is easily incorporated into the repair order.

## 7 LEVELS OF SUPPORT

**OnDemand5 Manager** is by far the best supported shop management product in the industry.

- 1 Training Videos, ScreenCam®
- 2 Quarterly Update Winners Circle CD-ROM
- 3 Self-Instruction Workbook
- 4 Putting Manager to Work Guide
- 5 Comprehensive Electronic User Guide
- 6 Mitchell 1 Technical Support
- 7 One Keystroke Online Help: <F1>



The Manager repair order screen provides access to TSBs, scheduled services, parts, labor and repair information.

# OnDemand5 ManagerPlus™

Going a step beyond, **ManagerPlus** provides all the functionality of Manager "plus" parts inventory and purchase-order control.

The screenshots show various inventory reports. The 'On Hand Inventory Value Report' is a detailed table with columns for Part Number, Description, Quantity, Unit Price, List Price, Average Cost, and Extended Cost. It lists various automotive parts like brake pads, rotors, and water pumps.

The printable inventory reports in ManagerPlus are easy to follow.

The 'Tire Package Selection' window displays a list of tire packages. The 'Tire - Pirelli' package is selected, showing a quantity of 1.0, a list price of 20.07, and an extended price of 20.07. Other packages include 'Mount Tire', 'Road Hazard Warranty', 'Align Front End', 'Lifetime Front and Alignment', 'Lifetime Road Hazard Warranty', and 'Valve Stems'. The total package price is \$146.37.

Users can now transfer tires, brakes and/or lube/oil filter (LOF) packages and add user-customizable parts and labor specials to orders.

The 'Check Profit' window features a 'Profit Wheel' pie chart and a 'Summary Detail' table. The pie chart breaks down profit into Labor Cost, Misc, Parts Cost, and Overhead. The table provides a detailed breakdown of sales, costs, and profit for different categories.

	Sale \$	Cost \$	Profit \$	%
Labor	425.00	80.85	344.15	81%
Sublet	0.00	0.00	0.00	0%
Parts	191.20	126.29	64.99	34%
Misc.		12.33		
Overhead		154.07		
Totals	616.28	373.54	242.74	39%

The Profit Wheel lets you quickly see a detailed breakdown of where the shop is making money—and where it may be losing it. Make sure the jobs being estimated are profitable before you take the work.

The 'Report Selections' window allows users to choose from various report categories: Follow Up, Client, Inventory Management, and Accounting. Under 'Inventory Management', reports include 'FL - Make and Manufacturer 1', 'FL - Make and Manufacturer 2', 'FL - New Computer System 1', and 'FL - Recommendation for Work 1'. Under 'Accounting', options include 'Report to Screen' and 'Report to Printer'. A printer selection dropdown is set to 'HP LasedJet 45i MX' and the number of copies is set to 1.

Manager gives you more than 100 printable reports, including customer follow-up, management and a variety of accounting reports.

The 'Scheduled Maintenance Service Intervals for (All Engines)' window shows a list of service intervals in miles/kilometers. The 'Action' column lists tasks such as 'INSPECT AUTOMATIC TRANSMISSION/TRANSAXLE FLUID', 'INSPECT BRAKE SYSTEM', 'REPLACE ENGINE OIL FILTER', and 'ROTATE TIRES'. The 'Notes' section includes instructions like '(1) Inspect annually' and '(2) Replace more often under dusty conditions.'

Select from a complete list of mileage intervals starting at 2,500 and up to 120,000 miles (including all manufacturer's recommended intervals). Another click transfers the checklist right into an estimate or repair order.